

# LOFTLINES

1 BEDROOM APARTMENTS  
LOFTER HOUSE

## APARTMENT SIZE

50.3 - 56.2 m<sup>2</sup>

## DEPOSIT

1 month's rent

## EPC RATING

B

## TYPE OF TENANCY

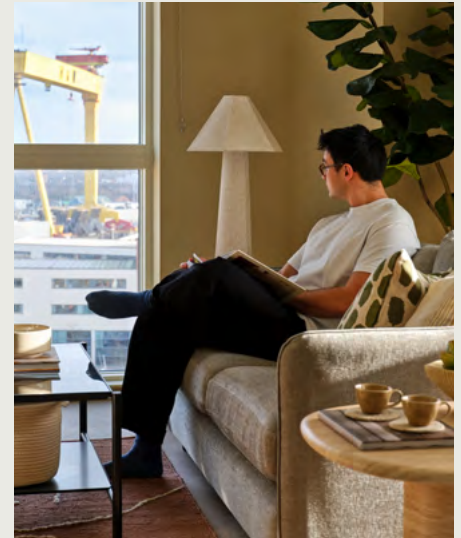
Private residential

## ACCOMMODATION COMPRISES

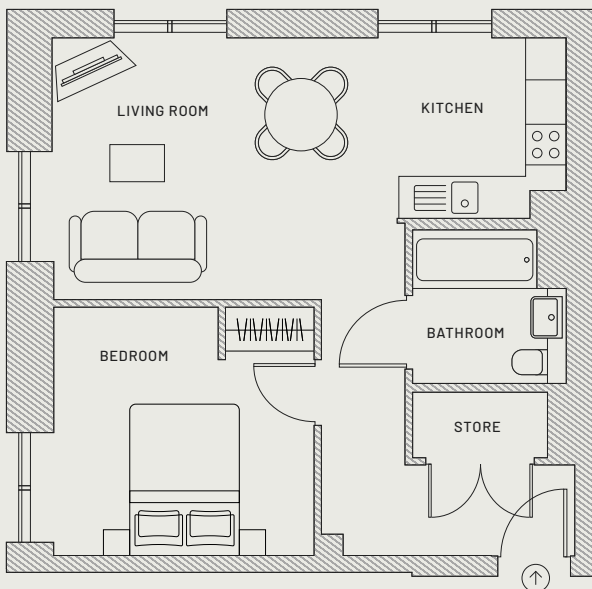
- Entrance
- Open plan living kitchen
- Master bedroom
- Separate bathroom

## GOOD TO KNOW

- Domestic rates are included in your rent
- Free broadband is included in your rent
- All tenancy applications subject to referencing



## FLOORPLAN 1B2P TYPE 1:

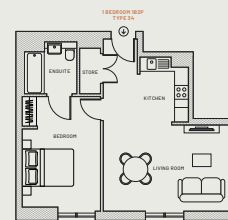


1 BEDROOM 1B2P  
TYPE 1

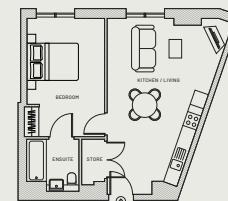
SIZE: 51.3 - 51.6 M<sup>2</sup>

BLOCK 11  
LEVELS 02-10

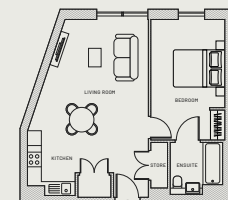
Other apartment types may be available.  
Speak to our team to see all layouts.



TYPE 34  
50.5 - 50.5 m<sup>2</sup>



TYPE 2  
50.6 - 50.7 m<sup>2</sup>



TYPE 6  
53.3 - 53.3 m<sup>2</sup>

\*Please note, floorplans are not  
drawn to scale

\*We offer flexibility to decorate your apartments - terms and conditions  
\*\*Some of our apartments are pet friendly - terms and conditions apply

Want to book a viewing or need to find out more?

Contact our team today on +44 (0) 289 602 0507 or WhatsApp on +44 (0) 7366 182650

Homes for rent by



# LOFTLINES

1 BEDROOM APARTMENTS  
SHIPWRIGHT HOUSE

## APARTMENT SIZE

50.2 - 65.8 m<sup>2</sup>

## DEPOSIT

1 month's rent

## EPC RATING

B

## TYPE OF TENANCY

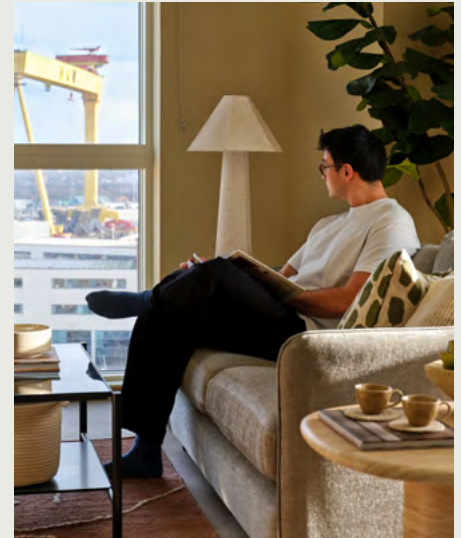
Private residential

## ACCOMMODATION COMPRISES

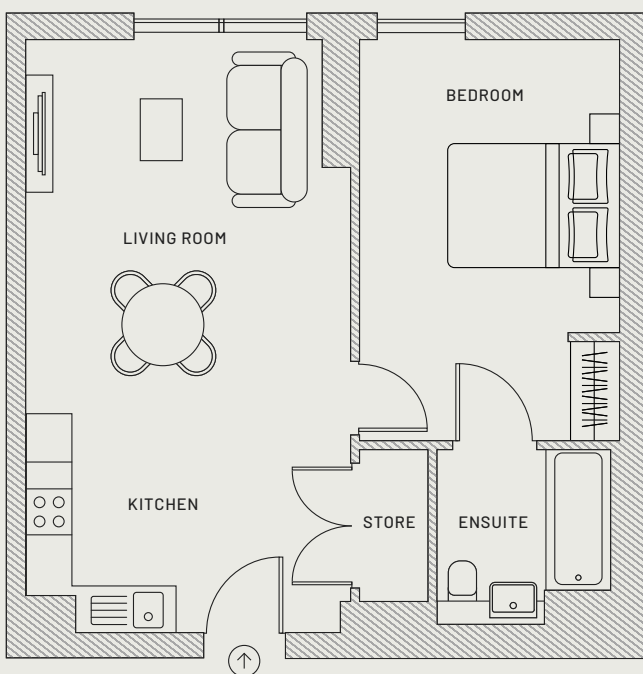
- Entrance
- Open plan living kitchen
- Master bedroom
- Separate bathroom

## GOOD TO KNOW

- Domestic rates are included in your rent
- Free broadband is included in your rent
- All tenancy applications subject to referencing



## FLOORPLAN 1B2P TYPE 3:



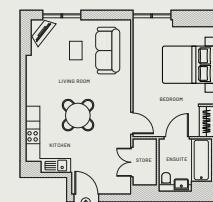
1 BEDROOM 1B2P  
TYPE 3

SIZE: 50.0 - 53.1 M<sup>2</sup>

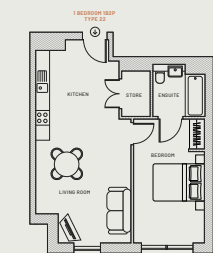


BLOCK 11A  
LEVELS 01-16

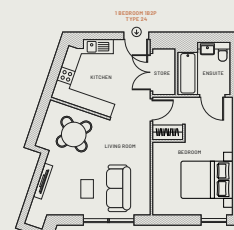
Other apartment types may be available.  
Speak to our team to see all layouts.



TYPE 19  
50.2 - 50.7 m<sup>2</sup>



TYPE 22  
50.3 - 51.3 m<sup>2</sup>



TYPE 24  
52.9 - 53.0 m<sup>2</sup>

\*Please note, floorplans are not  
drawn to scale

\*We offer flexibility to decorate your apartments - terms and conditions  
\*\*Some of our apartments are pet friendly - terms and conditions apply

Want to book a viewing or need to find out more?

Contact our team today on +44 (0) 289 602 0507 or WhatsApp on +44 (0) 7366 182650

# LOFTLINES

1 BEDROOM APARTMENTS  
SHIPWRIGHT HOUSE

## FURNITURE INCLUDED

Our interior designers have curated a premium – quality furniture package including bespoke pieces all set up and ready for when you move in. Prefer to bring your own? Speak to a member of our team to see if we have any unfurnished options still available.



DINING TABLE AND CHAIRS



KING SIZED BED AND BEDSIDE TABLE



SOFA AND COFFEE TABLE

## LIVING AREA

Our spacious living area comes all set with designer furniture, ready for you to get going from the very start. The bespoke furniture includes a sofa, coffee table, TV unit with storage, dining table, and dining chairs.

## BEDROOM

Enjoy your king size ottoman bed with gas-lift storage base and bespoke bedside tables. There's also plenty of storage in the form of built-in wardrobes with floor-to-ceiling mirrors on the door.

## PERKS

At Loftlines your new apartment comes with more than just four walls: enjoy free broadband, the choice of fully furnished living, 24/7 support from our on-site team. And that's just the beginning...



**HI-TECH GYM**



**OUTDOOR SPACES**



**PETS WELCOME**



**GAMES ROOM**



**BIKE STORAGE**



**ON-SITE TEAM**



**PRIVATE DINING**



**WORK SPACES**



**LOUNGES**

**AND MORE...**

\*We offer flexibility to decorate your apartments – terms and conditions

\*\*Some of our apartments are pet friendly – terms and conditions apply

Want to book a viewing or need to find out more?

Contact our team today on +44 (0) 289 602 0507 or WhatsApp on +44 (0) 7366 182650

Homes for rent by

